

ALUMNI CLUB LEADERS FORUM

November 20, 2024



PURDUE FOR LIFE
FOUNDATION

Purdue Alumni Clubs Forum

Reminders & Instructions

- **This forum is being recorded to share along with slides and chat content**
- **Participants will be muted**
- **Questions should be submitted using the chat function**



Purdue Alumni Clubs Forum

Agenda

- **University Updates**

- **Purdue for Life Foundation Updates**

- **Jillian Henry, Vice President of Engagement**
 - Engagement Scores

- **Alumni Clubs Updates**
 - Game Watches
 - Reminders



Purdue Alumni Clubs Forum

University Updates

- **Top 10 for International Students**
 - Purdue ranks #9 for international student enrollment
 - Ranks #24 among U.S. universities in the number of study abroad students
- **Purdue Memorial Union Welcomes the Holiday Season!**
 - The tree will arrive on November 22nd to the Great Hall
 - Tree lighting is 5:30 pm



Purdue Alumni Clubs Forum

Purdue for Life Updates

- **Day of Service - hosted by Purdue and Purdue for Life**
 - 33 trees were planted and mulched by McCutcheon Residence Hall
 - Additional mulching at Horticulture Park
 - This was the fifth day of service on campus and 894 trees were planted by volunteers
- **Holiday Silent Auction coming November 29 – December 6**

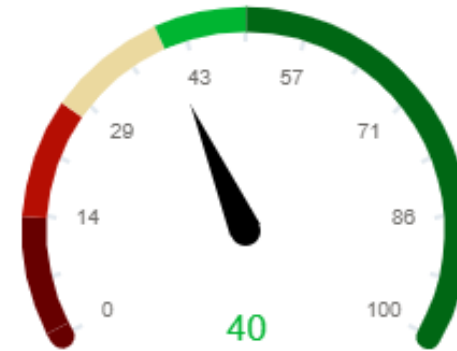


Purdue Alumni Clubs Forum

What is the Engagement Score?

Jillian Henry, VP of Engagement

Engagement Score



Philanthropy

50

Volunteer

34

Experiential

30

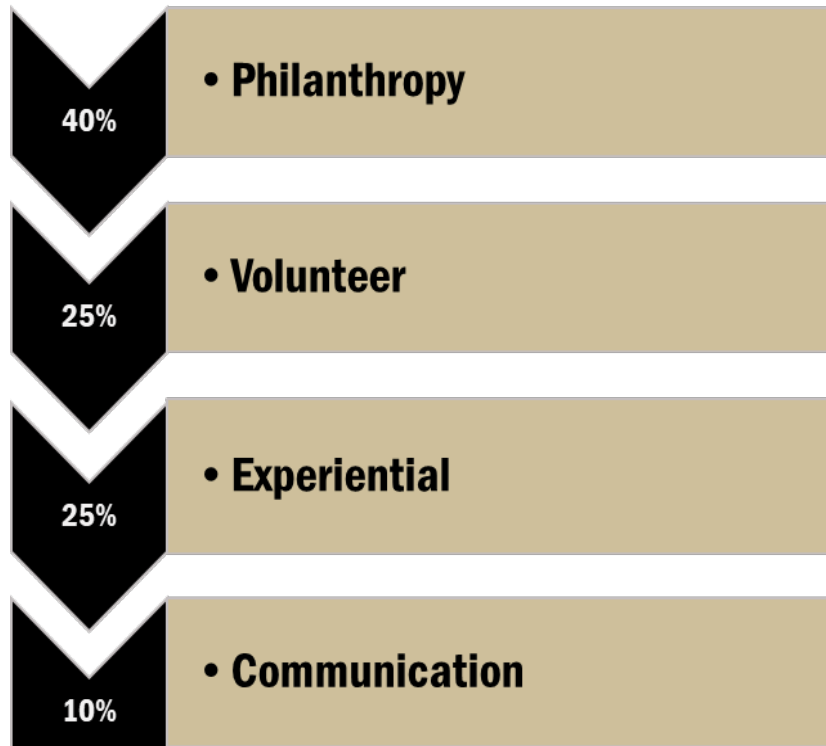
Communication

40

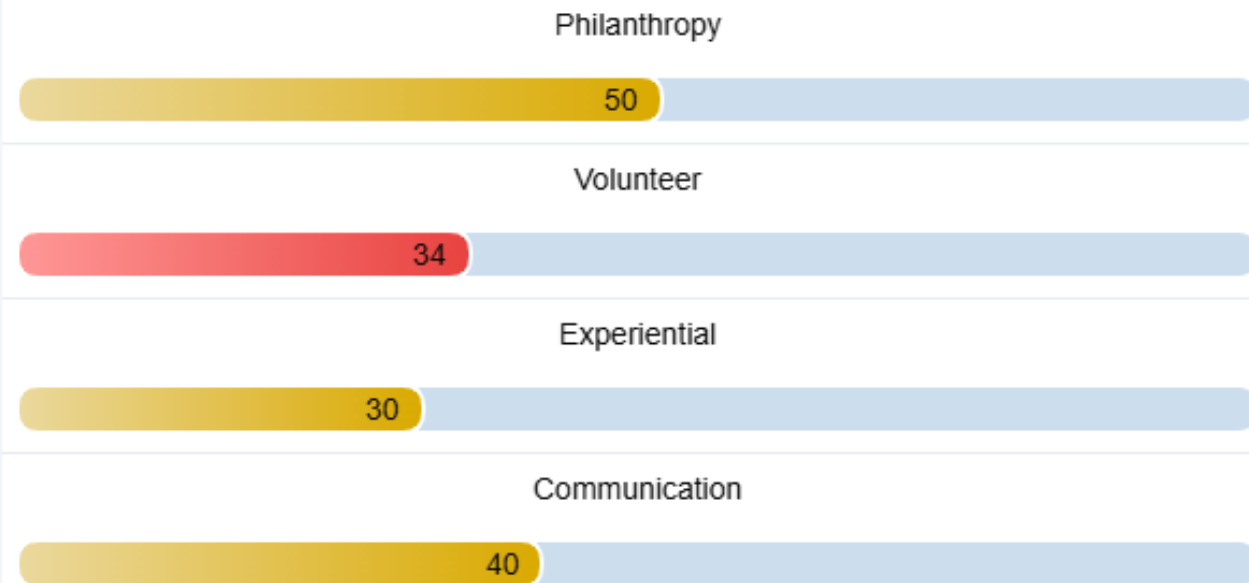
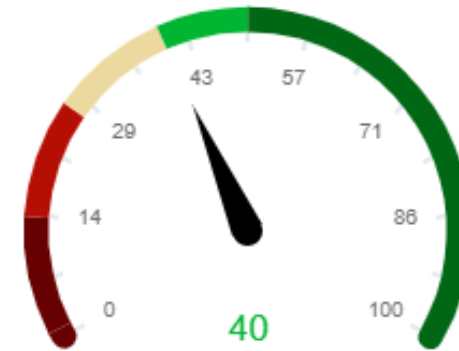
Purdue Alumni Clubs Forum

What is the Engagement Score?

Jillian Henry, VP of Engagement



Engagement Score



ENGAGEMENT SCORE MODES

*Recency
Frequency
Velocity
Consistency
Commitment*

Philanthropy

- *Diverse opportunities for alumni to make philanthropic investments that are meaningful to the donor and support the institution's mission and strategic goals. - CASE*

Experiential

Meaningful experiences that inspire alumni, are valued by the institution, promote its mission, celebrate its achievements and strengthen its reputation. - CASE

*Season Tickets
Events
Travel
Purdue degrees*

Volunteer activities

Volunteer

- *Formally defined and rewarding volunteer roles that are endorsed and valued by the institution and support its mission and strategic goals. - CASE*

Communication

▪ *Interactive, meaningful and informative communication with alumni that supports the institution's mission, strategic goals and reputation. - CASE*

*Email statistics
Substantive contacts*



CONSIDERATIONS

- Populations of alumni
 - By College
 - By Zip Code (Clubs)
 - By Affinity (gender, ethnicity, affinity network)
 - By Country

Engagement Score Updates – West Lafayette Campus

Alumni, West Lafayette campus *only*

Engagement Summary ... 1-Excellent, 2-Above Av... <input type="button" value="v"/>	Primary Constituent Type Alumni <input type="button" value="v"/>	Degree Institution Purdue University West ... <input type="button" value="v"/>	College/School All <input type="button" value="v"/>	Wealth Rating All <input type="button" value="v"/>	Age Group All <input type="button" value="v"/>	Full Name All <input type="button" value="v"/>
Gender All <input type="button" value="v"/>	Ethnicity All <input type="button" value="v"/>	Preferred Address MSA ... All <input type="button" value="v"/>	Preferred Address Alum... All <input type="button" value="v"/>	Preferred Address State All <input type="button" value="v"/>	Preferred Address Posta... All <input type="button" value="v"/>	Involvement All <input type="button" value="v"/>
PAA Membership Type All <input type="button" value="v"/>	PAA Membership Status All <input type="button" value="v"/>					



What does it mean to be engaged? Scores:

- Excellent 50+
- Above Average 40+
- Average 27+
- Below Average 14+
- Poor 1+

ALL Alumni & Friends, ALL Campuses (including members)



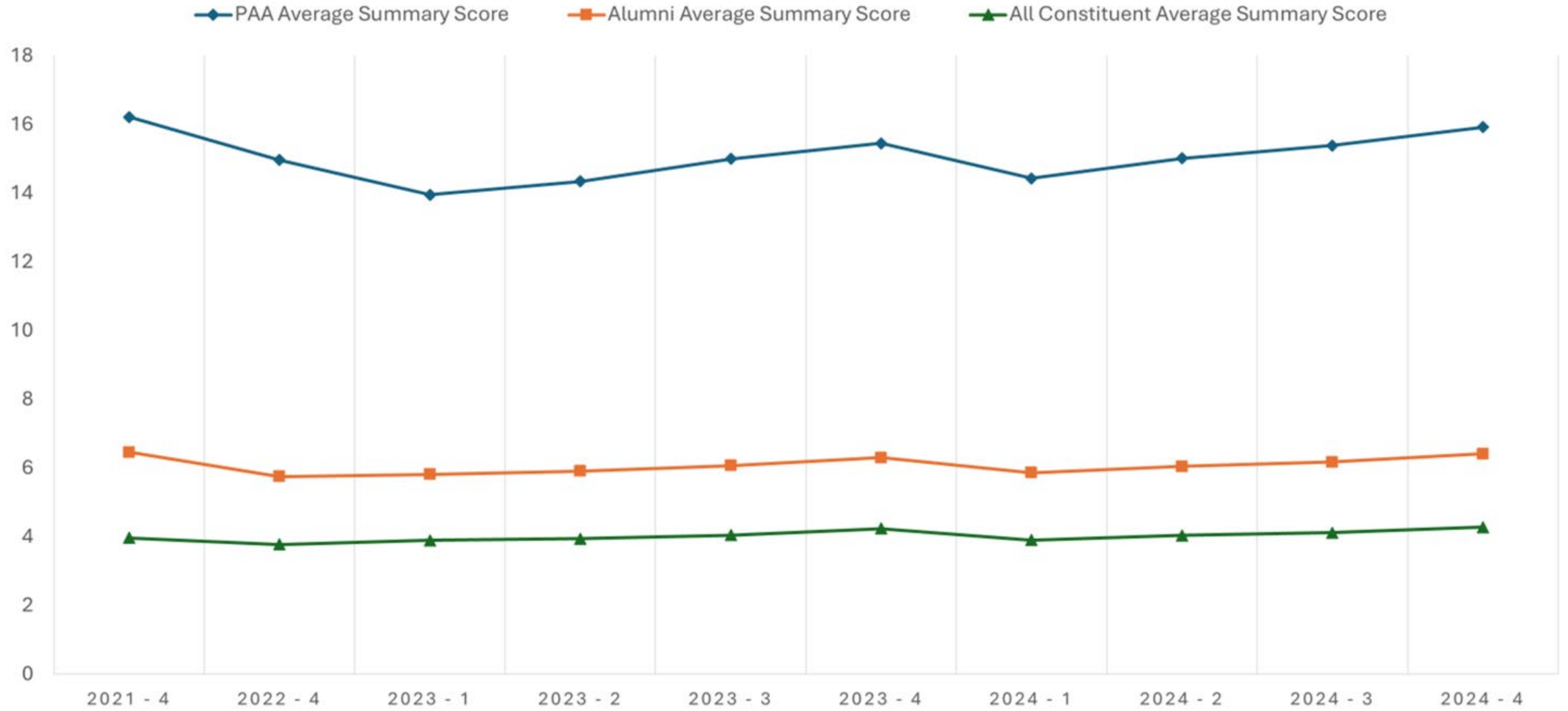
ALL Alumni, West Lafayette Campus (including members)



ONLY PAA Members (Life & Annual)



AVERAGE ENGAGEMENT SCORE



Game Watch Reminders

Basketball

- **Game watch request form is updated for basketball season**
- **Game times and TV broadcast stations are posted on the schedule**
- **Emails will go out on Wednesdays: December 4; December 18; January 8; January 22; February 19**
 - Requests need to be submitted the Monday prior to be included in the email



Scholarships

- **Email was sent to club presidents/treasurers/scholarship chairs**
 - Application will be posted December 1: <https://www.purdueforlife.org/alumni-leaders/student-guide-to-scholarships/>
 - January 15 – deadline to donate additional funds to the support account to increase projected award amount
 - January 25 – deadline for incoming freshmen to apply
 - March 1 – deadline for current Purdue students to apply
 - Questions? Email Susie Saberniak: slsaberniak@purdueforlifeorg



Final Reminders

- **Friday, December 13 by 5:00 pm ET is the last day to submit email/event requests to go out before break**
- **Gift Cards – gift cards are not an allowable expense due to IRS reporting. Gift cards are considered a cash gift which is not allowed**
- **Club webpage updates**
- **No forum in December – a newsletter will go out**



THANK YOU!

- The next forum will be Wednesday, January 15, 2025
- Recordings of past forums are available on the Alumni Club Resource Library website: <https://www.purdueforlife.org/alumni-leaders/clubs/resource-library/>

